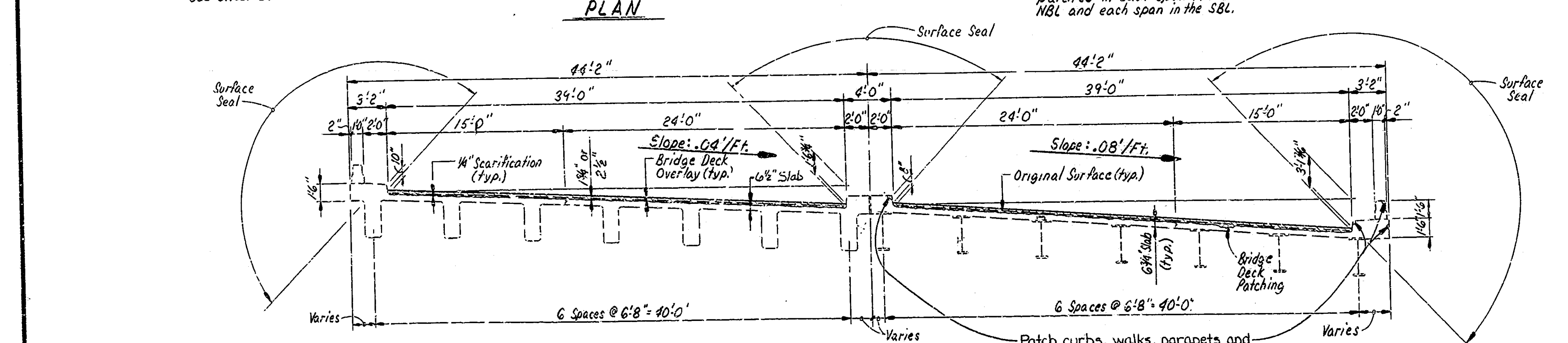
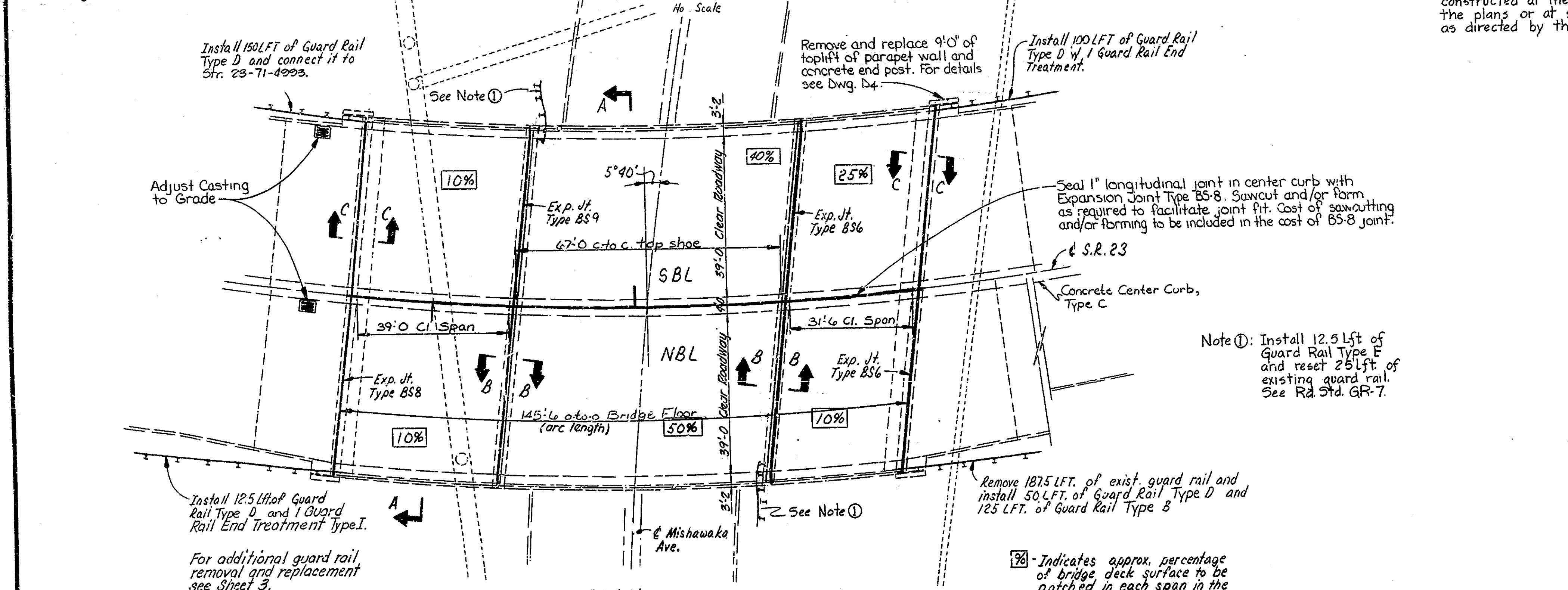
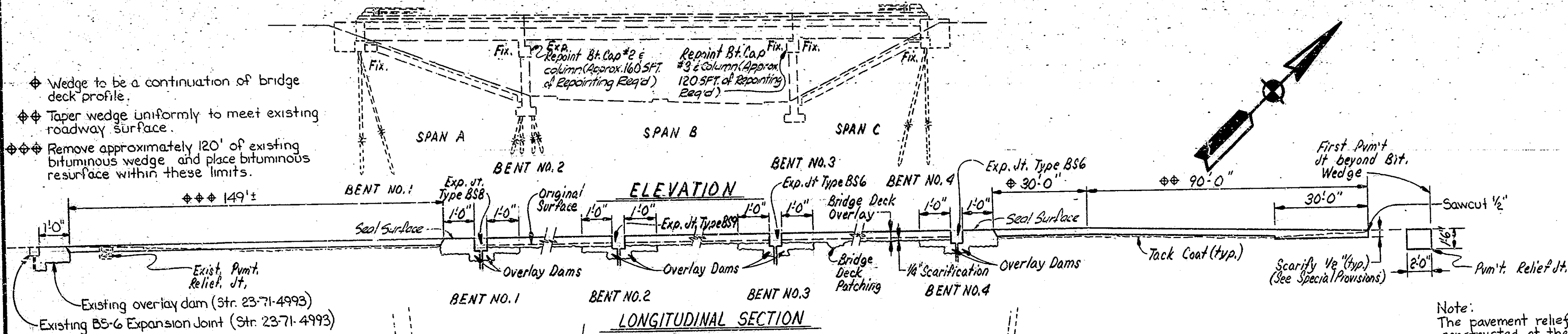


STRUCTURE BUILT TO A -1.27% GRADE



Note:
The pavement relief joint shall be constructed at the location shown on the plans or at such other location as directed by the Engineer in the field.

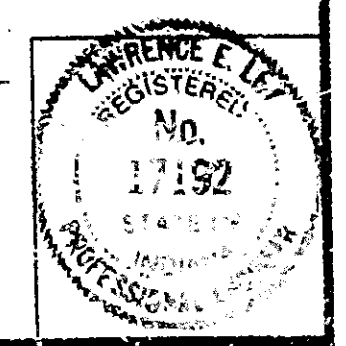
MATERIAL NOTES

- Bridge Deck Overlay to be:
3/4" Modified Portland Cement Concrete Overlay or 2 1/2" Dense Portland Cement Concrete Overlay (See Special Provisions)
 - Bituminous Wedges to be:
‡ Bituminous Surface Type 11B or 110 1/2 sy Bituminous Surface Type 11B over Bituminous Binder or Base
 - Pavement Relief Joint to be:
110 1/2 sy Bituminous Surface Type 11B over 1870 1/2 sy Bituminous Base.
 - Bituminous Resurface to be:
165 1/2 sy Bituminous Surface Type 11B.
 - ‡ The maximum depth of bituminous surface Type 11B shall not exceed 1 1/2 inches. At all locations where total wedge thickness will exceed 1 1/2 inches, bituminous binder or base shall be placed as a first course to within one inch of finished grade.
- NOTES:
For General Notes and Construction Procedure see Dwg. D3.
See Dwg. D1. for Standard Drawings
For Sections B-B and C-C see Dwg. D3.

GENERAL PLAN

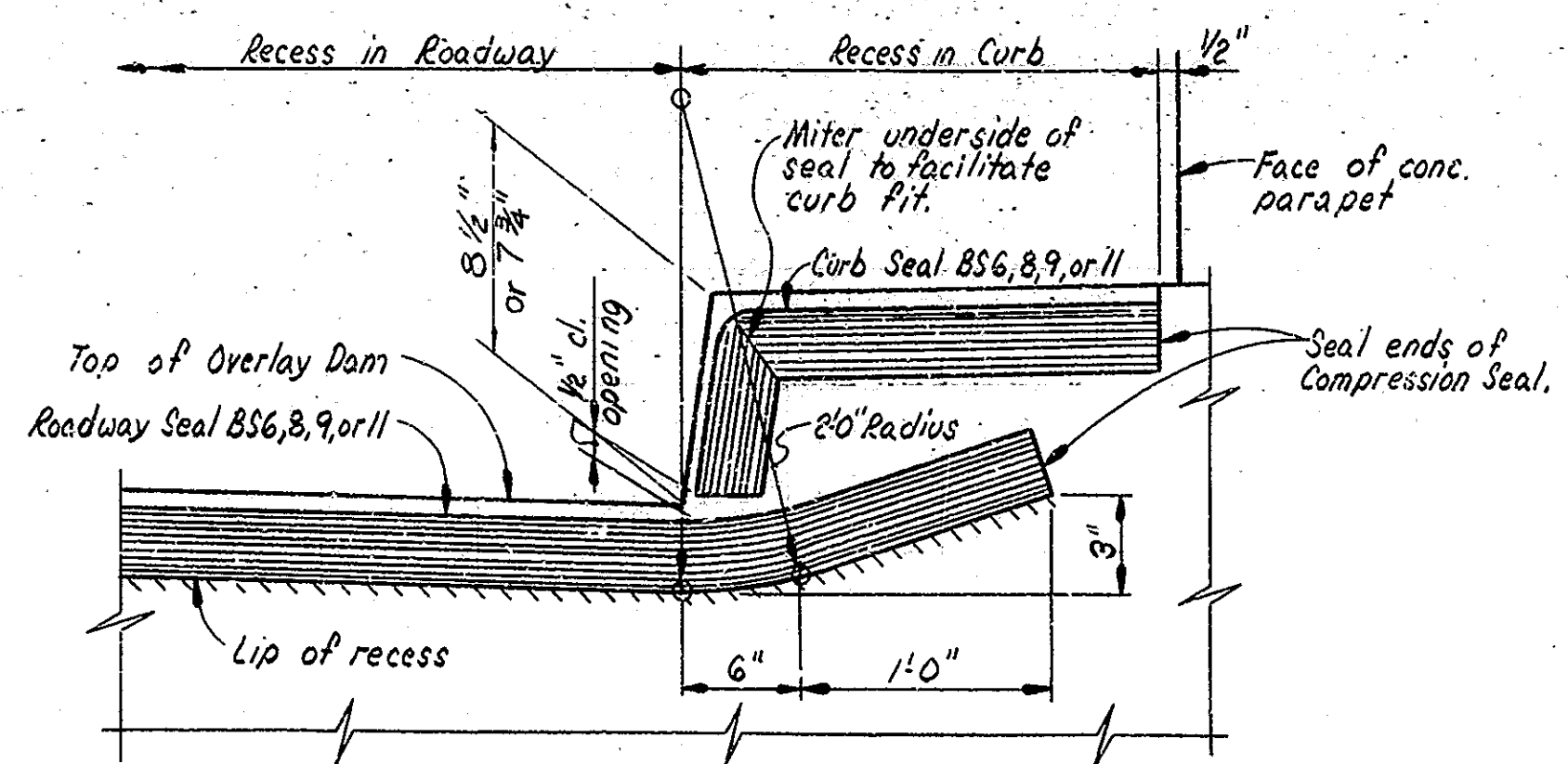
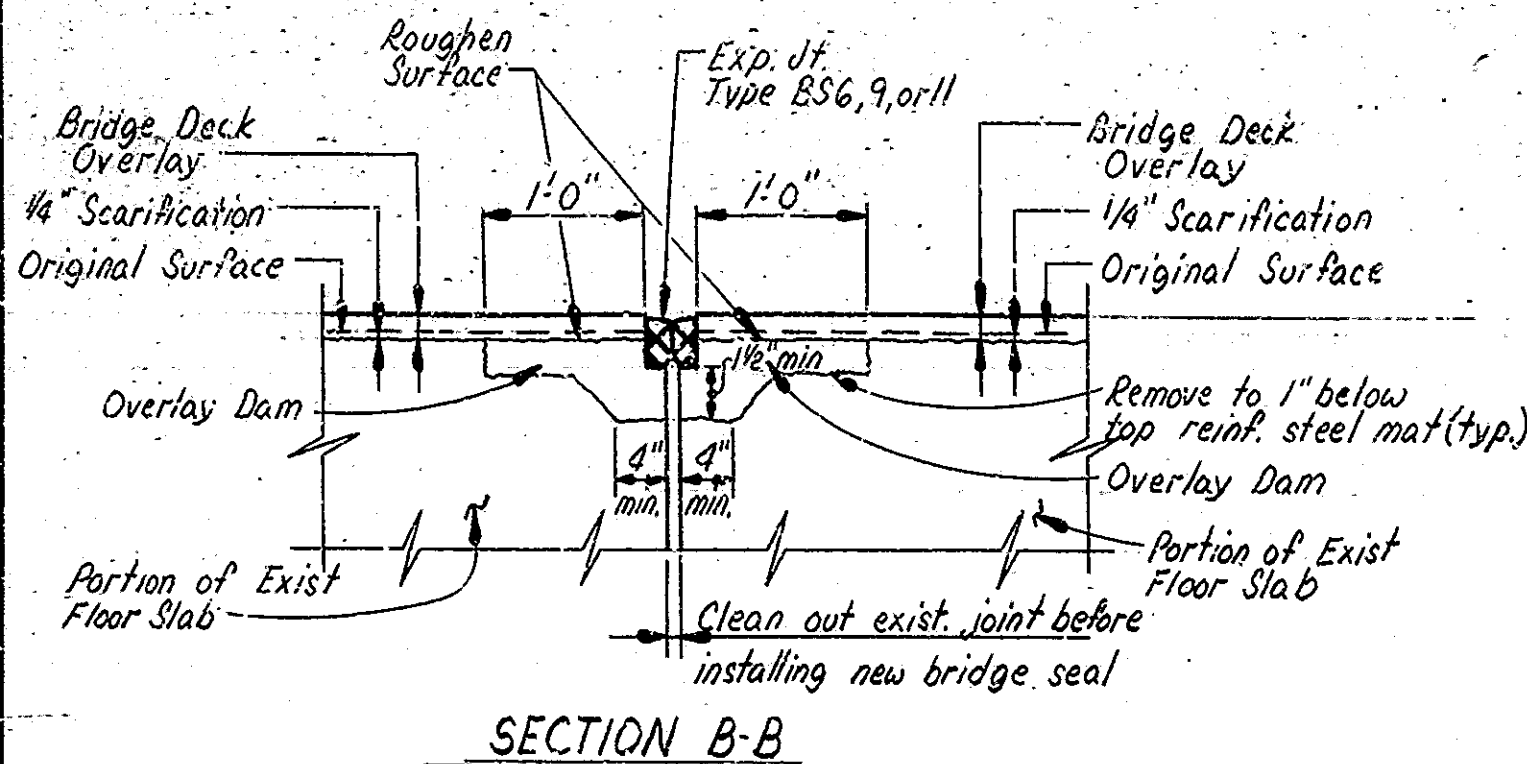
DECK RECONSTRUCTION AND OVERLAY ON R.C. GIRDER & COMPOSITE STEEL BEAM BRIDGE
3 SPANS- 39'-0", 67'-0", 39'-0"
2-39'-0" CL. RDWY. SKEW: 5° 40' RT.
STATE ROAD 23 OVER MISHAWAKA AVE.
INDIANA STATE HIGHWAY COMMISSION
CITY OF SOUTH BEND, ST. JOSEPH CO.

SCALE: 1/16" = 1'-0", U.N. DATE: 9/26/01
SUBMITTED FOR APPROVAL Lawrence E. Long
DRAWING: 02 OF 4 SHEET: 5 OF 25
PROJECT: M-5044(3)
CONTRACT NO. B-13964
BRIDGE FILE: 23-71-4994A

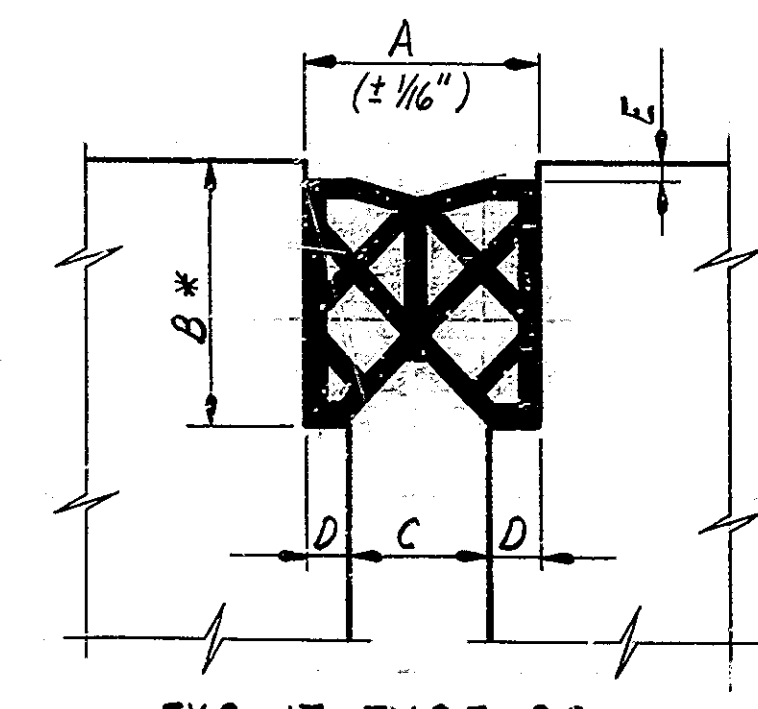
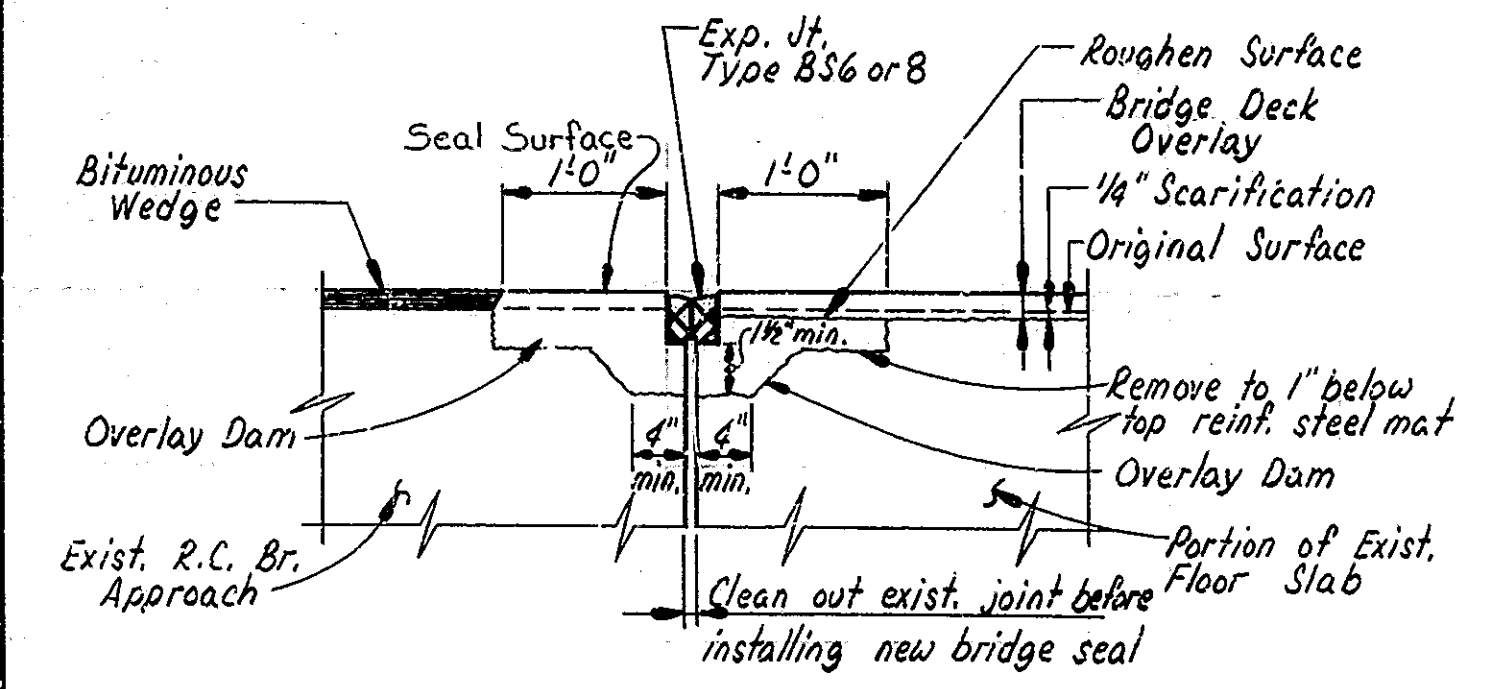
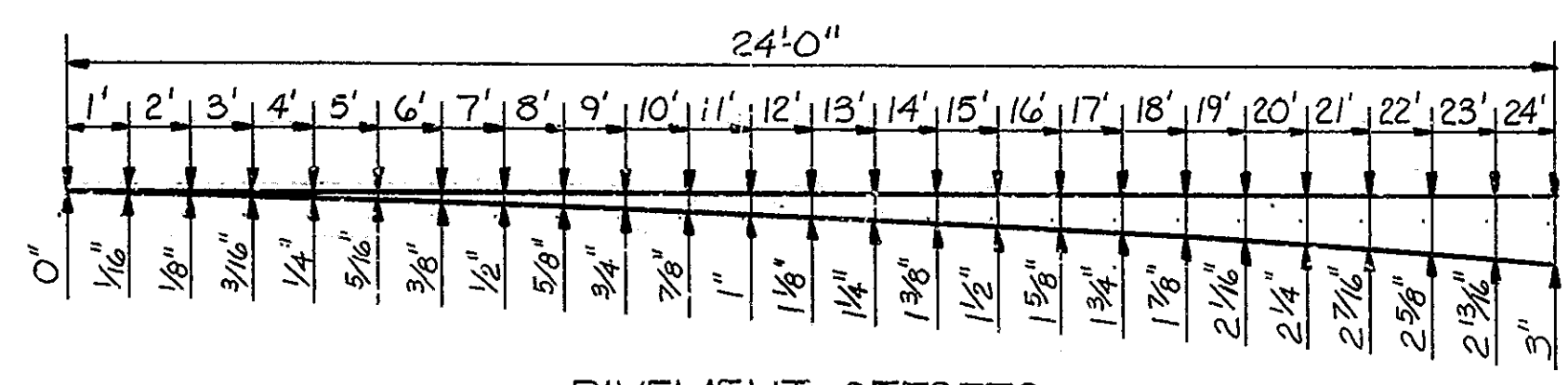


DESIGNED	CKD
DRAWN	CKD
TRACED	CKD

Rev. 1-28-83; Increase Special Class 'A' Concrete, Add Relief Jt. note, add Guard Rail Type E.



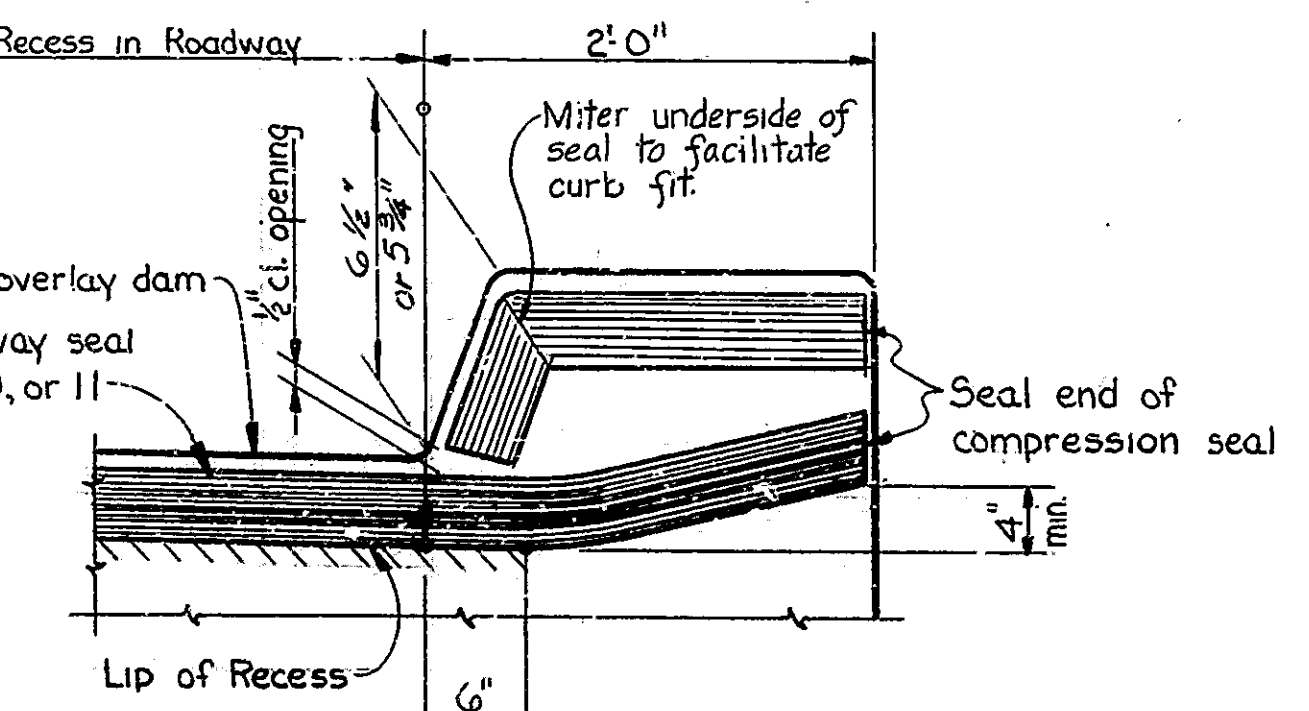
Clean out and rebuild existing curb joints to accommodate joint seal. Such work to be included in the cost of Expansion Joint Type BS6,8,9 or 11.



* To be determined in the field, see the Special Provisions.

Bridge Seal	A	B	C	D	E
BS6	1 5/8"	*	7/8" ±	3/8"	1/2"
BS8	2"	*	1 1/4" ±	3/8"	1/2"
* BS8	2"	*	1" ±	1/2"	1/2"
BS9	2 3/8"	*	1 5/8" ±	1/2"	3/4"
BS11	3 1/8"	*	2 1/8" ±	1/2"	3/4"

** BS-8 Joint for longitudinal joint in center curb.



GENERAL NOTES

- Plans for these structures are on file in the central office as Bridge Files 23-71-4992 and 23-71-4994 and are available upon request.
- Where new work is to be fitted to old work, the Contractor shall check all dimensions and conditions in the field and report any errors or discrepancies to the Engineer and assume responsibility for their correctness and the fit of the new parts to the old.
- The handchipping and cleaning of deteriorated deck areas shall be as directed by the Engineer. It is the intent of these plans that all such deteriorated concrete be removed and should there be any doubt as to the quality of the concrete removal shall be continued until perfectly sound concrete is exposed. All existing non-full depth patches to be removed.
- See Special Provisions for composition of concrete in overlay dams.
- All bituminous material required for this contract to be included in the pay item "Bituminous Mixture for Approaches", except Tack Coat.
- All removal equipment used for partial concrete removals of bridge structures shall be hand held, pneumatic hammers 30 lbs. maximum weight shall be used for all removal areas to be patched and all areas within 24 inches of full depth removal lines, pneumatic hammers, up to 90 lbs. maximum weight may be used for all other removals outside these limits. Deck areas that are to be removed full depth shall be completely separated from adjacent concrete before hammers heavier than 30 lbs. may be used.
- Only the front face and top of curbs, concrete portion of rail, face of coping, underneath side of slab to beam and top of overlay dams on R.C. Bridge Approaches are to be sealed.
- Concrete in patches for deteriorated concrete areas of slab to be Modified Portland Cement Concrete or Special Class "A" Concrete (See Special Provisions).
- The length and quantity of the bituminous wedge shown is based on the use of the Modified Portland Cement Concrete Overlay. See the Special Provisions.
- Seal joints and cracks in the approach pavement with hot-poured joint sealer before placing the bituminous wedge.

CONSTRUCTION PROCEDURE

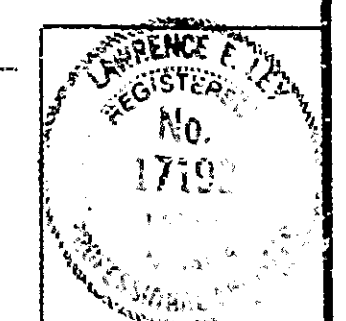
- Install traffic control devices for the repair of the exterior lanes as shown in Phase "A" (see Sheet 2).
- Scarify the bridge floor to a depth of 1/4". Remove deteriorated concrete as directed by the Engineer. Blast and clean all removal and scarified areas.
- Construct the Overlay Dams.
- Place the bridge deck patching and overlay on the bridge floor as shown on the plans and in accordance with the Special Provisions.
- Install the expansion joints as shown on the plans.
- Construct the bituminous wedges and other work shown on the plans.
- Clean and seal the front face and tops of curbs, concrete portion of rail face of coping, underneath side of slab to beam.
- Reposition the traffic control devices for the repair of the median lanes as shown in Phase "B", (see Sheet 3) and repeat steps 2 thru 7.
- Install and upgrade guard rail as shown on the plans. Complete all other work as shown on the plans.
- Remove the traffic control devices and reopen structures to normal traffic.

NOTE:

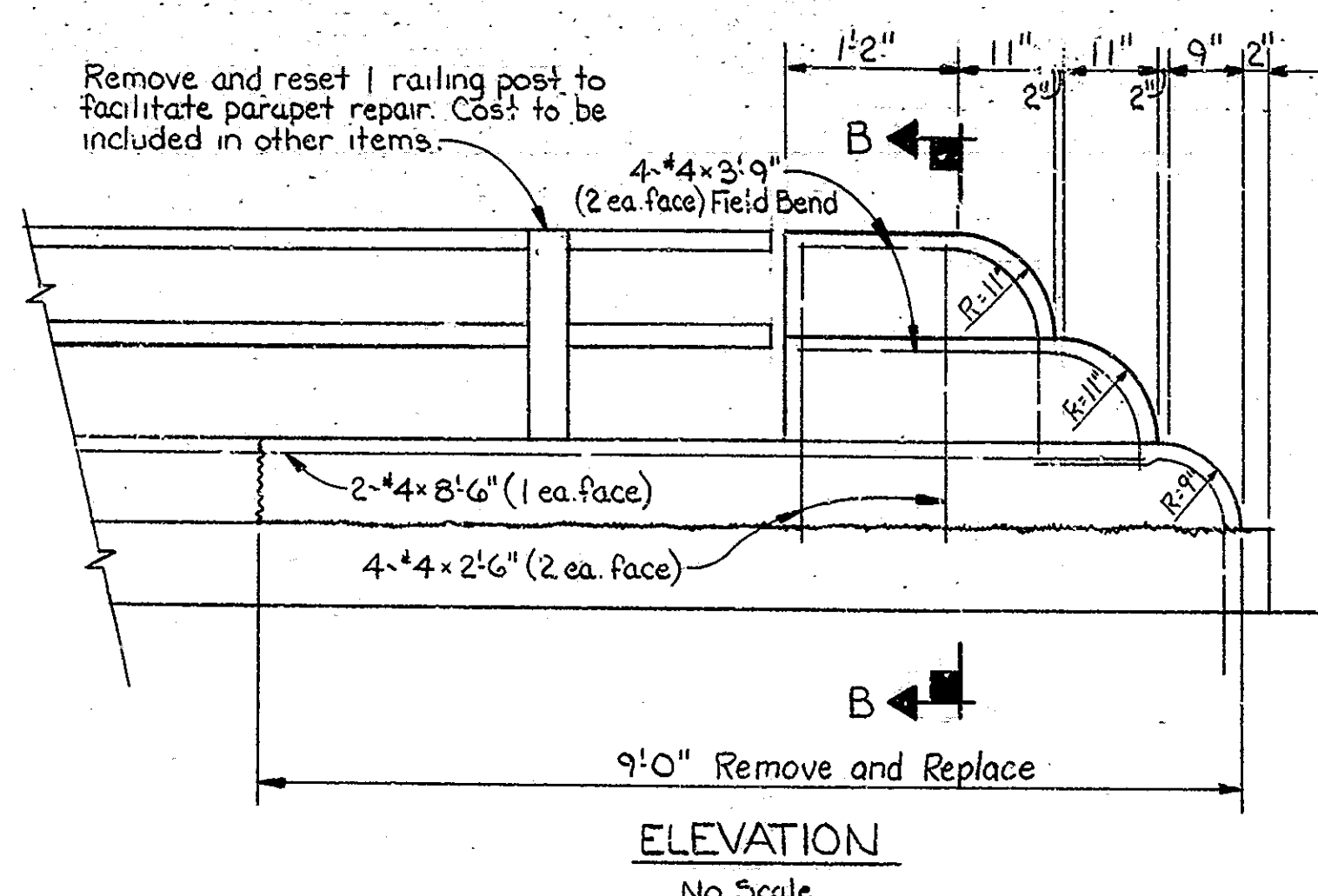
The numbers do not necessarily indicate the sequence of operations. For location of Sections B-B and C-C see Drawgs. D-1 and D-2.

**GENERAL NOTES AND CONSTRUCTION PROCEDURE
INDIANA STATE HIGHWAY COMMISSION**

SCALE:- NONE, U.N. DATE:- 9/20/81
 SUBMITTED FOR APPROVAL Lawrence C. Ray
 DRAWING: 03 OF 4 SHEET: 6 OF 25
 PROJECT:- M-5044(3)
 CONTRACT NO. B-13464
 BRIDGE FILE:- 23-71-4992A & 23-71-4994A

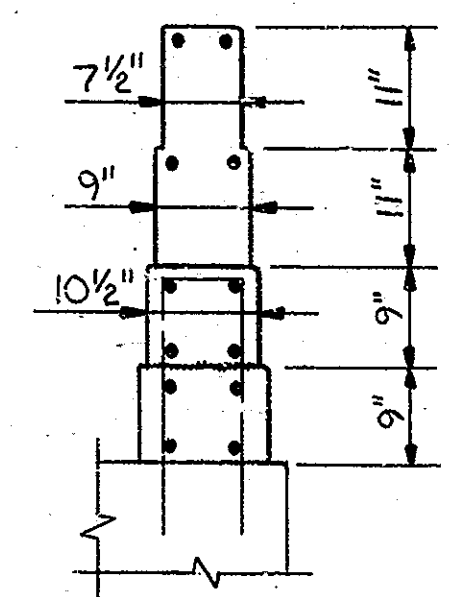


DESIGNED: CKD
 DRAWN: CF
 TRACED: CKD



Remove and replace concrete end post and 9'-0" portion of top lift of parapet wall at Northwest corner Structure 23-71-4994

Existing reinforcing steel to be cleaned, straightened and left in place.



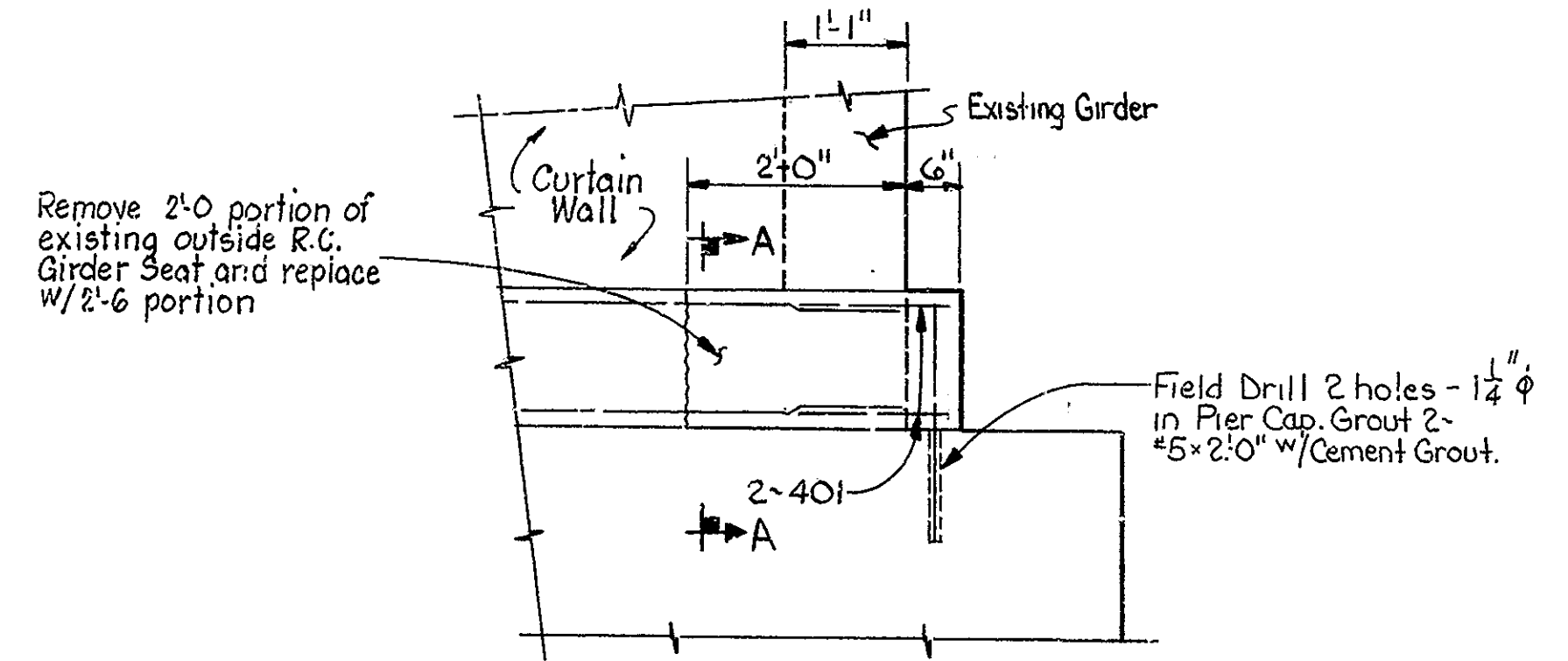
SECTION B-B
No Scale

ELEVATION
No Scale

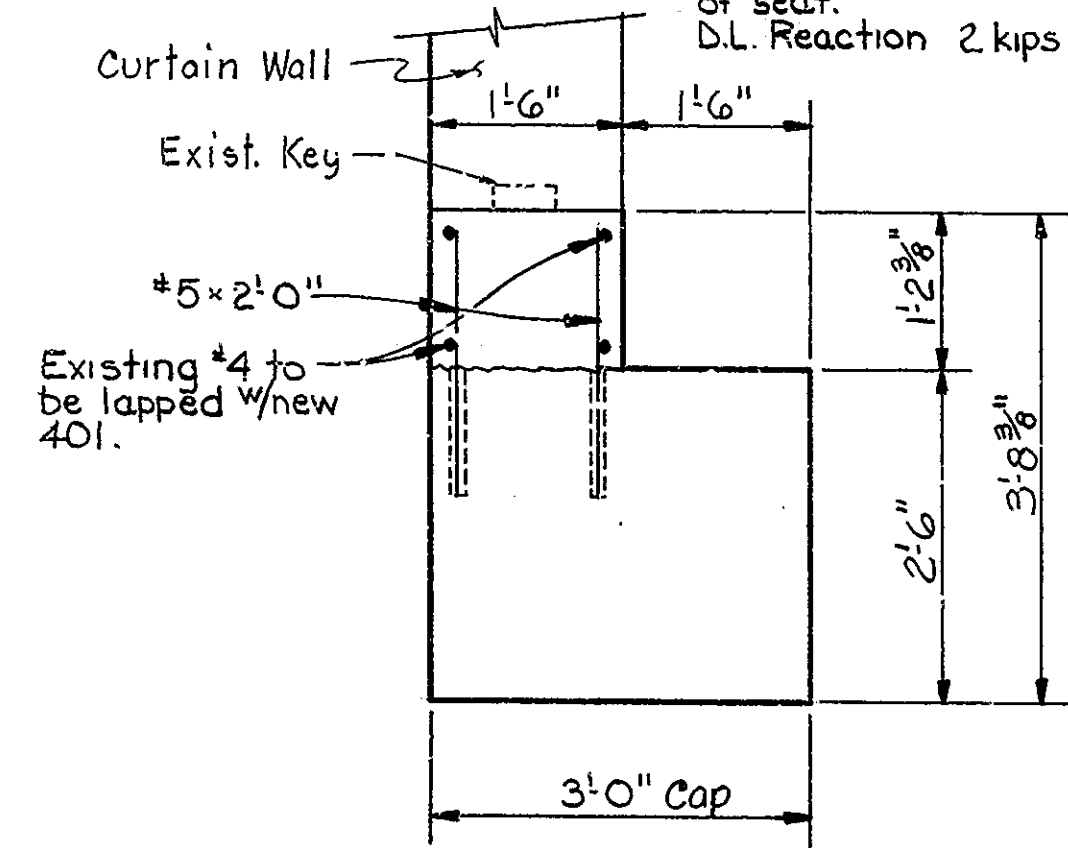
CONCRETE END POST & TOP LIFT OF PARAPET REPAIR DETAILS
(23-71-4994 A only)

BILL OF MATERIALS
END POST & TOP LIFT OF PARAPET WALL

REINFORCING STEEL			
Size or Mark	No. of Bars	Length	Weight (LBS.)
#4	2	8'-6"	
#4	4	3'-9"	
#4	4	2'-6"	
Total #4			28
Total Steel			28
CONCRETE			
Class "A" Concrete Railing			0.5 C.Ys.



Existing outside R.C. Girder to be supported during construction of seat. D.L. Reaction 2 kips

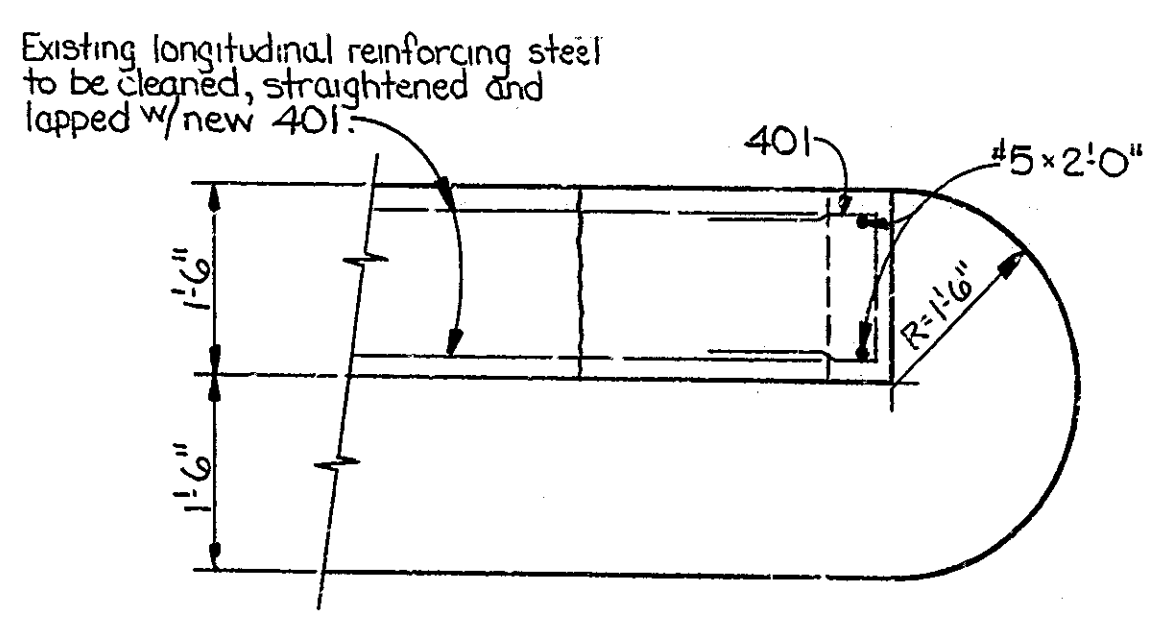


SECTION A-A
No Scale

ELEVATION
No Scale

BILL OF MATERIALS
R.C. GIRDER SEAT REPLACEMENT
Quantities shown for one seat only (typical 4 seats)

REINFORCING STEEL			
Size or Mark	No. of Bars	Length	Weight (LBS.)
#5	2	2'-0"	
Total #5			4
401	2	3'-10"	
Total #4			5
Total Steel			9
CONCRETE			
Class "A" Concrete in Substructure			0.2 C.Ys.
Field Drilled Holes In Conc.			2 EA



CAP PLAN
No Scale

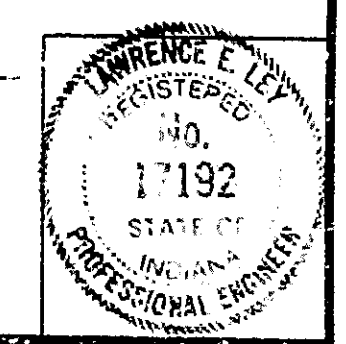
MISCELLANEOUS DETAILS

INDIANA STATE HIGHWAY COMMISSION

R.C. GIRDER SEAT REPLACEMENT DETAILS
(23-71-4992 A only)

NOTE: This same replacement will be done at all 4 outside R.C. Girders Seats. See General Plan for Structure 23-71-4992 A, Dwg. D1.

SCALE:-
SUBMITTED FOR APPROVAL
DATE:- 9/30/81
DRAWING:- D4 OF 4 SHEET:- 7 OF 25
PROJECT:- M-5044(3)
CONTRACT NO. B-13964
BRIDGE FILE:- 23-71-4992 A & 23-71-4994 A



DESIGNED	CKD
DRAWN	PB
TRACED	CKD

ESTIMATE OF QUANTITIES

STRUCTURE PAY ITEMS					
CODE NO.	DESCRIPTION	UNIT	STRUCTURE		TOTAL QUANTITY
			4992A	4994A	
51009	CONCRETE CLASS C IN SUPERSTRUCTURE	CYS.			
51001	CONCRETE CLASS A IN SUPERSTRUCTURE	CYS.			
51005	CONCRETE CLASS A IN SUBSTRUCTURE	CYS.	0.8		0.8
51010	CONCRETE CLASS B ABOVE FOOTINGS	CYS.			
51015	CONCRETE CLASS B IN FOOTINGS	CYS.			
51878	SPECIAL CLASS A CONCRETE	SFT	50	70	120
52045	CONCRETE STRUCTURAL MEMBERS	LSUM			
51030	REINFORCING STEEL	LBS.	36	28	64
51082	EPOXY COATED REINFORCING STEEL	LBS.			
51035	STRUCTURAL STEEL	LBS.			
51038	STRUCTURAL STEEL	LSUM			
51090	BRONZE PLATES	LBS.			
51070	ANCHOR PLATES (MR-AP 1)	EACH			
51075	ANCHOR PLATES (MR-AP 2)	EACH			
51080	ANCHOR PLATES (MR-AP 3)	EACH			
51085	ANCHOR PLATES (MR-AP 4)	EACH			
51112	ANCHOR BOLTS	EACH			
51068	TIE DOWN ASSEMBLY MR-UA	EACH			
51095	CAST IRON, DRAIN PIPE, 4 INCH	LBS.			
51100	CAST IRON, DRAIN PIPE, 6 INCH	LBS.			
51105	CAST IRON, DRAIN PIPE, 8 INCH	LBS.			
51110	CAST IRON, GRATES, BASINS AND FITTINGS	LBS.			
51134	REMOVAL OF PRESENT RAILING	LFT.			
51132	RAILING RESET	LFT.			
51135	RAILING (TYPE 5 OR C)	LFT.			
51120	RAILING (TYPE 5A OR C1)	LFT.			
51125	RAILING (TYPE 6 OR D)	LFT.			
51130	RAILING (TYPE 7 OR E)	LFT.			
51025	CLASS A, CONCRETE RAILING	CYS.	0.5		0.5
51131	BARRIER RAILING TYPE X	LFT.			
51215	CLASS X EXCAVATION	CYS.			
51220	WEY EXCAVATION	CYS.			
51223	WATERWAY EXCAVATION	CYS.			
51224	WATERWAY EXCAVATION	LSUM			
51226	DRY EXCAVATION	CYS.			
51230	FOUNDATION EXCAVATION (UNCLASSIFIED)	CYS.			
51231	FOUNDATION EXCAVATION (UNCLASSIFIED)	LSUM			
51813	PNEUMATICALLY PLACED MORTAR	SFT.			
51870	REPOINTING MASONRY IN STR'S.	SFT.	160	280	440
51814	WELDED STEEL WIRE FABRIC	SFT.			
51859	PAINTING OLD STEEL BRIDGE	LSUM			
51881	EXPANSION JOINT, TYPE B82	LFT.			
51885	EXPANSION JOINT, TYPE B88	LFT.	325	181	506
51887	EXPANSION JOINT, TYPE B88	LFT.	188	236	424
51888	EXPANSION JOINT, TYPE B89	LFT.		90	90
51890	EXPANSION JOINT, TYPE B811	LFT.	108		108
51925	EXPANSION JOINT, CLASS S-S	LFT.			
51926	EXPANSION JOINT, CLASS T-S	LFT.			

STRUCTURE PAY ITEMS					
CODE NO.	DESCRIPTION	UNIT	STRUCTURE		TOTAL QUANTITY
			4992A	4994A	
51135	TIMBER PILES FURNISHED, UNTREATED	LFT.			
51140	TIMBER PILES DRIVEN, UNTREATED	LFT.			
51145	TIMBER PILES FURNISHED, TREATED	LFT.			
51150	TIMBER PILES DRIVEN, TREATED	LFT.			
51155	PILE SHELLS FURNISHED AND DRIVEN (12 INCH)	LFT.			
51160	PILE SHELLS FURNISHED AND DRIVEN (14 INCH)	LFT.			
51185	STEEL H PILES FURNISHED AND DRIVEN (8 BP 36)	LFT.			
51190	STEEL H PILES FURNISHED AND DRIVEN (10 BP 42)	LFT.			
51195	STEEL H PILES FURNISHED AND DRIVEN (12 BP 53)	LFT.			
51210	PILE ENCASEMENT (CONCRETE)	LFT.			
	REMOVAL PRESENT STRUCTURE (PORTIONS) 23-71-4992A	LSUM	1		1
51328	REMOVAL OF PRESENT STRUCTURE (PORTIONS) 23-71-4994A	LSUM		1	1
51330	REMOVAL OF PRESENT STRUCTURE	LSUM			
51335	TEMPORARY BRIDGES AND APPROACHES TEMPORARY SUPPORTS	LSUM	1		1
51366	CONCRETE SLOPEWALL 5 INCH	SYS.			
51365	SLOPEWALL	SYS.			
51370	RIPRAP	SYS.			
51375	REVEMENT RIPRAP	TON			
51371	HANDLAID RIPRAP 12 INCH	SYS.			
51372	BUMPED RIPRAP	TON			
51374	PLASTIC FILTER CLOTH	SYS.			
51430	STEEL DRAIN PIPES	EACH			
51435	STEEL DRAIN PIPE (6 INCH)	LSUM			
51440	STEEL DRAIN PIPE (8 INCH)	LSUM			
51092	STEEL PIPE CONDUIT (2 INCH)	LFT.			
51866	RIVETS REMOVED	EACH			
51864	FIELD DRILLED HOLES	EACH			
51867	STRUCTURAL STEEL CUTTING	SIN			
51868	FIELD DRILLED HOLES IN CONCRETE	EACH	8		8
	SURFACE SEAL (4992A)	LSUM	1		1
	SURFACE SEAL (4994A)	LSUM		1	1
51826	SURFACE SEAL	SFT.			
51827	BRIDGE DECK MEMBRANE	LSUM			
51842	BRIDGE DECK OVERLAY	SYS.	1566	1761	3327
51845	BRIDGE DECK SURFACE	SYS.			
51843	BRIDGE DECK PATCHING	SET.	4648	5208	9856
51833	CONCRETE SCARIFYING	SYS.	A 2232	B 1794	4026
51840	ADDITIONAL CONCRETE SCARIFYING	SYS.			
51837	MASTING AND CLEANING	SYS.	1566	1761	3327
51838	FINISHING AND CURING	SYS.	1566	1761	3327
	FULL DEPTH PATCHING	SFT.	110		110
	OVERLAY DAMS	SFT.	771	824	1595

APPROACH PAY ITEMS					
CODE NO.	DESCRIPTION	UNIT	STRUCTURE		TOTAL QUANTITY
			4992A	4994A	
02020	UNCLASSIFIED EXCAVATION	CYS.			
52240	COMMON EXCAVATION	CYS.			
52245	BORROW	CYS.			
52250	B BORROW	CYS.			
52255	B BORROW FOR STRUCTURE BACKFILL	CYS.			
52303	REMOVAL OF PAVEMENT (2 INCH)	SYS.	29	20	49
02235	CREAKING PAVEMENT	SYS.			
	REMOVAL BITUMINOUS SURFACE (8 INCH)	SYS	1010	1000	2010
52480	TERMINAL JOINT	LFT.			
52485	CONTRACTION JOINT, TYPE D-1	LFT.			
52580	CONCRETE PAVEMENT REINFORCED (7 INCH)	SYS.			
52285	CONCRETE PAVEMENT REINFORCED (8 INCH)	SYS.			
52290	CONCRETE PAVEMENT REINFORCED (9 INCH)	SYS.			
52300	CONCRETE PAVEMENT REINFORCED (10 INCH)	SYS.			
06070	CONCRETE SIDEWALK	SYS.			
52305	TYPE P COMPACTED AGGREGATE FOR BASE (SIZE NO. 53)	TON			
52606	COVER AGGREGATE	TON			
52608	COVER AGGREGATE (SIZE NO. 12)	TON			
52605	AGGREGATE FOR SHOULDER DRAINS	TON			
52610	AGGREGATE FOR UNDER DRAINS	CYS.			
52308	TYPE G COMPACTED AGGREGATE FOR BASE (SIZE NO. 53)	TON			
52310	SUBBASE	CYS.			
52315	BITUMINOUS STABILIZED SUBBASE TYPE I, II, OR III	TON			
52320	BITUMINOUS STABILIZED SUBBASE	TON			
52445	BITUMINOUS BASE	TON			
04260	BITUMINOUS BASE (SIZE NO 5D)	TON			
52451	BITUMINOUS BINDER	TON			
52450	BITUMINOUS SURFACE	TON			
52456	BITUMINOUS MATERIAL FOR TACK COAT	SYS.	3012	2495	5507
52461	BITUMINOUS MATERIAL FOR PRIME COAT	SYS.			
04348	SEAL COAT TYPE 2	SYS.			
52470	BITUMINOUS MIXTURE FOR APPROACHES #	TON	231	195	426
52475	BITUMINOUS MIXTURE FOR SHOULDER	TON			
52480	BITUMINOUS MATERIAL, APPLIED	TON			
52500	GUARD RAIL, TYPE A	LFT.			
52505	GUARD RAIL, TYPE B	LFT.		287.5	287.5
52510	GUARD RAIL, TYPE C	LFT.			
52515	GUARD RAIL, TYPE D	LFT.	300	312.5	612.5
52520	GUARD RAIL, TYPE E	LFT.	25	25	50
52525	GUARD RAIL, TYPE F	LFT.			
52530	GUARD RAIL, TYPE G	LFT.			
52535	GUARD RAIL, TYPE H	LFT.			
06035	RESET GUARD RAIL	LFT.	50	50	100
52535	REMOVAL OF GUARD RAIL	LFT.		387.5	387.5
52380	SODDING	SYS.			
52385	MULCHED SEEDING "R"	SYS.			
52388	SEED MIXTURE "R"	LBS.			
52397	SEED MIXTURE "TR"	LBS.			
52400	MULCHING MATERIAL	TON			
52405	FERTILIZER	TON			
52410	WATER	M.G.			
52415	AGRICULTURAL LIMESTONE	TON			
52428	SEED MIXTURE "CV"	LBS.			
52401	MULCHING MATERIAL (WOOD CELLULOSE FIBER)	TON			
52440	GUARD RAIL END TREATMENT TYPE A	EACH	2	3	5
52440	MAINTAINING TRAFFIC	LSUM			
52370	CLEARING RIGHT-OF-WAY	LSUM			
52434	BREAKAWAY CABLE	LBS.			
	TERMINAL TYPE "A"	EACH			

1. INCLUDES _____ TONS FOR SEED MIXTURE "R"
 2. INCLUDES _____ TONS FOR SEED MIXTURE "R"
 3. INCLUDES _____ TONS FOR SEED MIXTURE "R"

* Breakdown of Bituminous Mixture for Approaches

4992	4994	
Wedge	113 Tons	73 Tons
Resurface	89 Tons	103 Tons
Rmt. Relief Joint	29 Tons	19 Tons
TOTAL	231 Tons	195 Tons

REVISIONS	
DATE	ITEM
1-28-83	51875, Full Depth Patching, Surface Seal (Sft to LSUM), 52368, Add Special Tape, 52520, 06035, 51863

APPROACH PAY ITEMS					
CODE NO.	DESCRIPTION	UNIT	STRUCTURE		TOTAL QUANTITY
			4992A	4994A	
07025	PIPE, GR. A (0.064" FBCCS) 12"	LFT.			
07075	PIPE, GR. A (0.064" FBCCS) 15"	LFT.			
07125	PIPE, GR. A (0.064" FBCCS) 18"	LFT.			
07175	PIPE, GR. A (0.064" FBCCS) 24"	LFT.			
07225	PIPE, GR. A (0.064" FBCCS) 30"	LFT.			
07275	PIPE, GR. A (0.064" FBCCS) 36"	LFT.			
07325	PIPE, GR. A (0.064" FBCCS) 42"	LFT.			
10000	PIPE, GR. D (0.064" CS) 12"	LFT.			
10025	PIPE, GR. D (0.064" CS) 15"	LFT.			
10050	PIPE, GR. D (0.064" CS) 18"	LFT.			
10075	PIPE, GR. D (0.064" CS) 24"	LFT.			
10100	PIPE, GR. D (0.064" CS) 30"	LFT.			
10125	PIPE, GR. D (0.064" CS) 36"	LFT.			
10150	PIPE, GR. D (0.064" CS) 42"	LFT.			
34000	PIPE, 0.052" FBC PERF. CS 6"	LFT.			
38000	PIPE, 0.064" FBCCS 12"	LFT.			
52375	CONCRETE CLASS A IN STRUCTURE	CYS.			
52376	CONCRETE CLASS C IN STRUCTURE	CYS.			
48000	PIPE END SECTION 12"	EACH			
48005	PIPE END SECTION 15"	EACH			
48010	PIPE END SECTION 18"	EACH			
48015	PIPE END SECTION 24"	EACH			
48020	PIPE END SECTION 30"	EACH			
48025	PIPE END SECTION 36"	EACH			
48030	PIPE END SECTION 42"	EACH			
46035	PIPE END SECTION 33"	EACH			
46040	PIPE END SECTION 36"	EACH			
45000	INLET, TYPE A-1	EACH			
45025	INLET, TYPE D-6	EACH			
45030	INLET, TYPE E-7	EACH			
45070	INLET, TYPE P-12a	EACH			
06335	PAVED SIDE DITCH TYPE A	LFT.			
06340	PAVED SIDE DITCH TYPE B	LFT.			
06345	PAVED SIDE DITCH TYPE C	LFT.			
06350	PAVED SIDE DITCH TYPE D	LFT.			
06355	PAVED SIDE DITCH TYPE E	LFT.			
06360	PAVED SIDE DITCH TYPE F	LFT.			
06365	PAVED SIDE DITCH TYPE G	LFT.			
52831	DRILLED HOLES FOR MUDJACKING	EACH			
52830	MATERIAL FOR MUDJACKING	CYS.			
	CASTING ADJUSTED TO GRADE	EACH	2	2	4

APPROACH PAY ITEMS					
CODE NO.	DESCRIPTION	UNIT	STRUCTURE		TOTAL QUANTITY
			4992A	4994A	
06040	42" FENCE - E. FIELD	LFT.			
06045	48" FENCE, CHAIN LINK	LFT.			
52340	CONSTRUCTION SIGNS (TYPE A)	EACH	15	15	30
52345	CONSTRUCTION SIGNS (TYPE B)	EACH	4	4	8
52350	STANDARD BARRICADES (TYPE III A)	EACH	4		4
06650	STOP SIGN, TYPE R-1A	EACH			
06652	DO NOT PASS SIGN, TYPE R-11-A	EACH			
06655	YIELD SIGN, TYPE R-301	EACH			
06657	PASS WITH CARE SIGN, TYPE R-12A	EACH			
06660	CURVE SIGN, TYPE W-2AR	EACH			
06665	CURVE SIGN, TYPE W-2AL	EACH			
06670	REVERSE CURVE SIGN, TYPE W-4AR	EACH			
06675	REVERSE CURVE SIGN, TYPE W-4AL	EACH			
06680	LARGE ARROW SIGN, TYPE W-11A	EACH			
06685	STOP AHEAD SIGN, TYPE W-13A	EACH			
06725	DELINEATOR WITH POST, TYPE D-1 3 INCH	EACH			
06740	DELINEATOR WITH POST, TYPE D-2 3 INCH	EACH			
06770	DELINEATOR POST	EACH			
06771	FLEXIBLE DELINEATOR POST	EACH			
52368	TEMPORARY PAVEMENT MARKING TAPE	LFT.	1425	1025	2450
52397	TEMPORARY PAVEMENT MARKING PAINT	LFT.			
	SPECIAL TEMPORARY PAVEMENT MARKING TAPE	LFT	2775	3220	5995
52360	RIGHT-OF-WAY MARKERS	EACH			
06500	MONUMENT, TYPE A	EACH			
06505	MONUMENT, TYPE B	EACH			
06510	MONUMENT, TYPE C	EACH			
06515	MONUMENT, TYPE D	EACH			
32821	FLASHING ARROW SIGN	WKS.	24	24	48
06713	LINE, SOLID, WHITE, 4"	LFT.	780	840	1620
06714	LINE, SOLID, YELLOW, 4"	LFT.	1065	910	1975
	LINE, SKIP, WHITE, 4"	LFT.			
06716	REMOVAL OF LINE	LFT.			
06717	REMOVAL OF LINE, SOLID, YELLOW, 4"	LFT.			
06718	REMOVAL OF LINE, SKIP, WHITE, 4"	LFT.	720	735	1455
52536	TEMPORARY CONCRETE BARRIER	LFT.	1120	1220	2340
52819	TEMPORARY CROSSOVER TYPE "B"	EACH			

SUMMARIZED T